

BODY OF WORK

DRAWING

MARK RANGE: 11 - 20

Low D

TITLE:

LISA'S VENUS

NO. OF WORKS:

4

SIZE:

four – 40 x 30 cm

ON WHAT TERMS SHOULD WE CONSIDER THE BODY OF WORK?

WHAT IS THE STUDENT TRYING TO DO?

WHAT IS THE EFFECT OF THE BODY OF WORK ON US?

The student shows an exploration of the female identity by presenting four artworks strongly connected to Botticelli's 'Birth of Venus'. Images from parts of Botticelli's painting have been appropriated, cropped and placed in the context of the four seasons. Three of the artworks place images from Botticelli's 'Birth of Venus' in contemporary settings. The images are altered to construct humour and simple puns. Devices such as the window and male viewers evidence the student's attempts to manipulate audience views.

EXPLANATION

IN WHAT WAYS ARE CONCEPTUAL AND MATERIAL PRACTICE REPRESENTED?

Conceptual and material practice evidence some subtleties. Four photocopied images have been manipulated with paint, oil pastel, dry pastel and conte crayon. The student has referenced the postmodern frame to explore some of the possible qualities of a contemporary Venus. The black and white artwork referencing Botticelli's 'Birth of Venus' suggests the season of winter with its lack of colour. This artwork is the most faithful to the original 'Birth of Venus'. The lack of changes in this work pays homage to the enduring significance of the authentic 'Birth of Venus'.

JUDGEMENT

HOW DOES THE STUDENT'S CONCEPTUAL AND MATERIAL PRACTICE COMPARE TO THE DESCRIPTIVE STATEMENTS IN THE MARKING GUIDELINES?

Although the student has investigated possible meanings connected to Botticelli's 'Birth of Venus' this investigation is limited. Issues and concepts that the student is attempting to investigate are not clearly revealed. The overall meaning of this body of work remains confusing. In relation to material practice not enough credible evidence is provided to suggest a coherent meaning to the audience. The series shows a crude use of materials with little exploration of qualities that it is possible for the selected materials to reveal. The selection of materials does not assist in conveying the student's intent.

BODY OF WORK

DRAWING

MARK RANGE: 11 - 20

Low D

TITLE:

LISA'S VENUS



BODY OF WORK

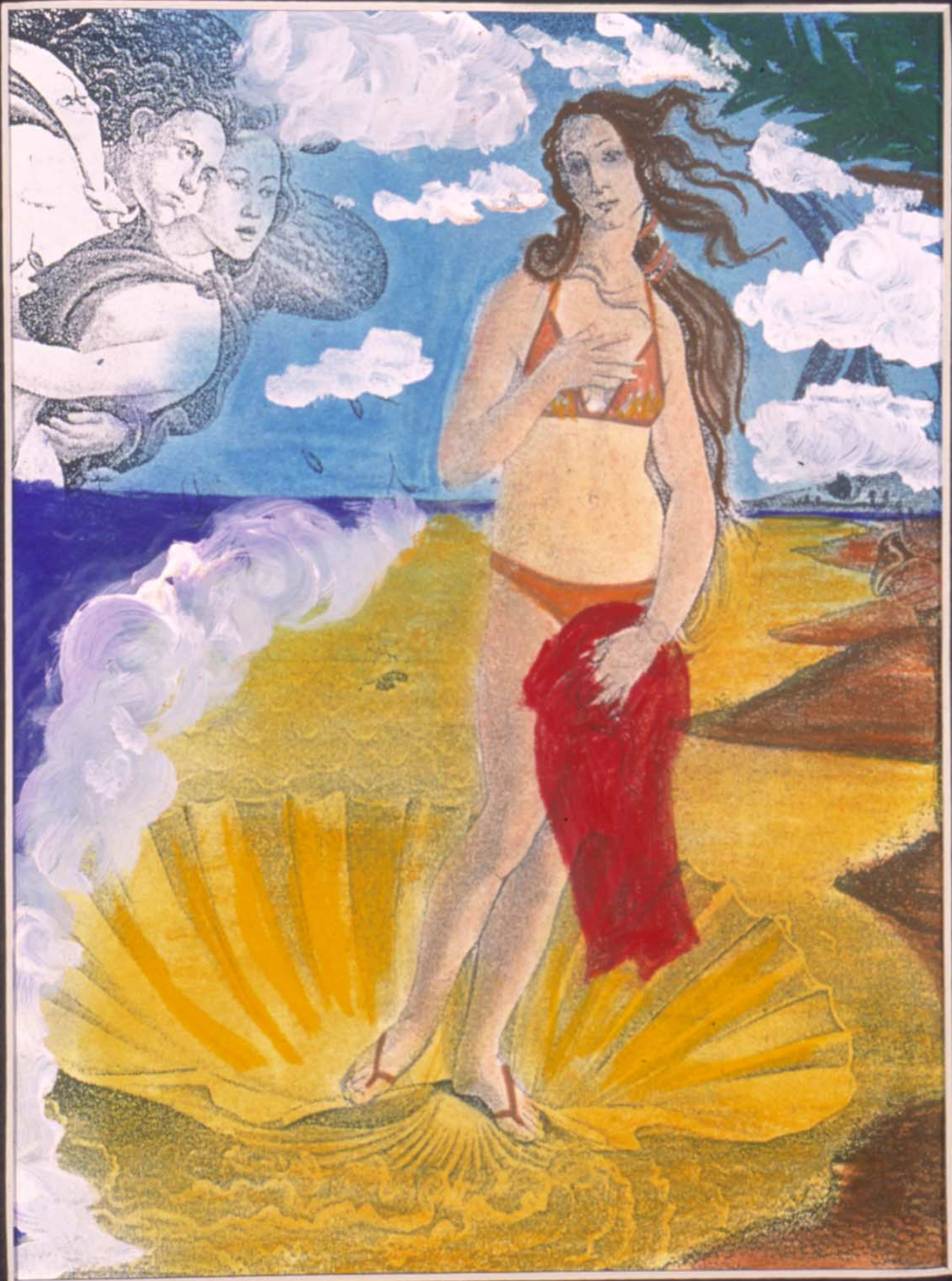
DRAWING

MARK RANGE: 11 - 20

LOW D

TITLE:

LISA'S VENUS



BODY OF WORK

DRAWING

MARK RANGE: 11 - 20

LOW D

TITLE:

LISA'S VENUS

